

目不可使用計算機\*

**Part 1 Picture Description**

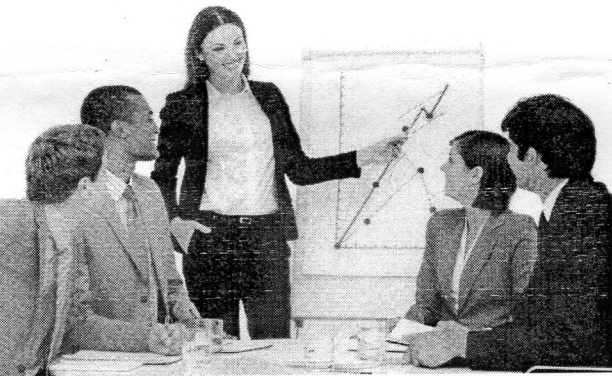
*Directions: For each question in this part, you will hear four statements about a picture in your test book. When you hear the statements, you must select the one statement that best describes what you see in the picture. Then find the number of the question on your answer sheet, and mark your answer. The statements will not be printed in your test book and will be spoken only one time.*

**Look at the sample below.**

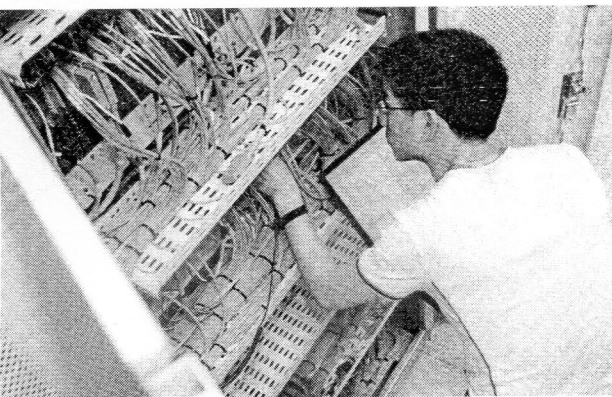
**You will see:**



1.



3.



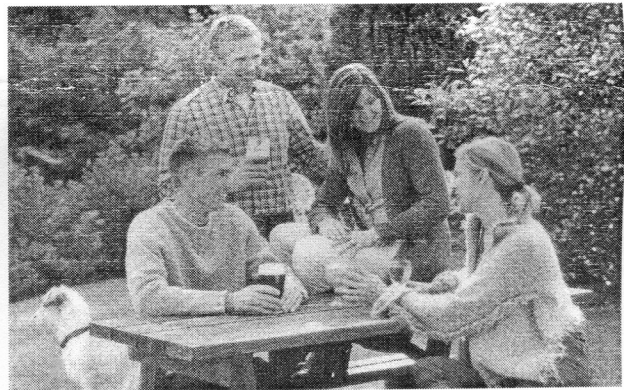
**You will hear:**

Now listen to the four statements.

- (A) The woman is fixing broken computer parts.
- (B) The man has a screwdriver in his hand.
- (C) The man has just finished typing a letter.
- (D) The woman is sitting in front of the man.

*Statement (B), "The man has a screwdriver in his hand," best describes what you see in the picture. Therefore, you should choose answer (B).*

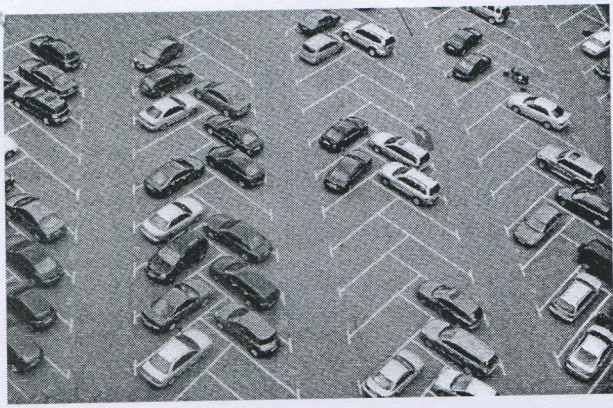
2.



4.



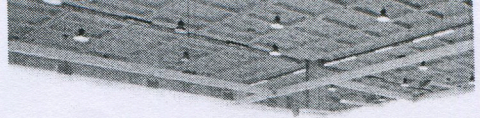




7.



9.



8.



10.





目不可使用計算機\*

**Part 2 Questions and Responses**

*Directions: You will hear a question or statement and three responses spoken in English. They will be spoken only one time and will not be printed in your test book. Select the best response to the question or statement, and mark the letter (A), (B), or (C) on your answer sheet.*

**Example:**

**You will hear:**

Good morning, John.  
How are you?

**You will also hear:**

- (A) I'm fine, thank you.
- (B) It's cold, isn't it?
- (C) Well, it's a difficult issue.

*The best response to the question "Good morning, John. How are you?" is choice (A) "I'm fine, thank you." Therefore, you should choose answer (A).*

- |  |  |
|--|--|
| 11. Mark your answer on your answer sheet. | 26. Mark your answer on your answer sheet. |
| 12. Mark your answer on your answer sheet. | 27. Mark your answer on your answer sheet. |
| 13. Mark your answer on your answer sheet. | 28. Mark your answer on your answer sheet. |
| 14. Mark your answer on your answer sheet. | 29. Mark your answer on your answer sheet. |
| 15. Mark your answer on your answer sheet. | 30. Mark your answer on your answer sheet. |
| 16. Mark your answer on your answer sheet. | 31. Mark your answer on your answer sheet. |
| 17. Mark your answer on your answer sheet. | 32. Mark your answer on your answer sheet. |
| 18. Mark your answer on your answer sheet. | 33. Mark your answer on your answer sheet. |
| 19. Mark your answer on your answer sheet. | 34. Mark your answer on your answer sheet. |
| 20. Mark your answer on your answer sheet. | 35. Mark your answer on your answer sheet. |
| 21. Mark your answer on your answer sheet. | 36. Mark your answer on your answer sheet. |
| 22. Mark your answer on your answer sheet. | 37. Mark your answer on your answer sheet. |
| 23. Mark your answer on your answer sheet. | 38. Mark your answer on your answer sheet. |
| 24. Mark your answer on your answer sheet. | 39. Mark your answer on your answer sheet. |
| 25. Mark your answer on your answer sheet. | 40. Mark your answer on your answer sheet. |

**Part 3 Short Conversations**

*Directions: You will hear some conversations between two people. You will be asked to answer three questions about what the speakers say in each conversation. Select the best response to each question, and mark the letter (A), (B), (C), or (D) on your answer sheet. The conversations will be spoken only one time and will not be printed in your test book.*

- |                                  |                                       |
|----------------------------------|---------------------------------------|
| 41. What is the man looking for? | 42. What is probably the woman's job? |
| (A) A formal suit                | (A) A sales clerk                     |
| (B) A pair of pants              | (B) A model                           |
| (C) Sports wear                  | (C) A tailor                          |
| (D) A dress                      | (D) A customer                        |

本科目不可使用計算機\*

43. What does the woman tell the man to do?  
 (A) Go to the sportswear section on the 7th floor  
 (B) Ask someone in the sportswear department  
 (C) Ask someone on the 7th floor for assistance  
 (D) Go to the information desk to get a brochure

44. What was the man supposed to do?  
 (A) Rent a kid's video at the store  
 (B) Go with his wife to a movie  
 (C) Help his children with a project  
 (D) Take his children to a movie

45. What is the woman's reaction?  
 (A) She is not interested.  
 (B) She is frustrated.  
 (C) She is calm.  
 (D) She is worried.

46. What will the woman do later?  
 (A) Watch a children's movie  
 (B) Go to a computer class  
 (C) Do a school assignment  
 (D) Go to an exercise class

47. Who is closing the candy factory?  
 (A) The manager  
 (B) The director  
 (C) The owner  
 (D) The mayor

48. Why are they closing?  
 (A) They are losing money on it.  
 (B) They have too many workers.  
 (C) They need to repair machinery.  
 (D) They want to sell the factory.

49. For how long will the factory be closed?  
 (A) For at least one month  
 (B) For the next three years  
 (C) Permanently  
 (D) Until the end of the year

50. How long have they been waiting for Tommy?  
 (A) 15 minutes  
 (B) 20 minutes  
 (C) 30 minutes  
 (D) 60 minutes

51. How often does the man say Tommy is late?  
 (A) Always  
 (B) Sometimes  
 (C) Often  
 (D) Never

52. Why do they have to leave soon?  
 (A) To catch a flight  
 (B) To catch a bus  
 (C) To catch a meeting  
 (D) To catch a play

53. What does the man ask the woman to do?  
 (A) Lock the back door  
 (B) Lock the front door  
 (C) Get the car started  
 (D) Change her shoes

54. What is true about the man?  
 (A) The woman bought him brown shoes.  
 (B) He told the woman he changed shoes.  
 (C) His new shoes are very formal.  
 (D) His new shoes are comfortable.

55. Why did the man exchange the black shoes?  
 (A) He did not like the color.  
 (B) They were too tight.  
 (C) They were too big.  
 (D) He did not like the style.

56. What is being held on Saturday?  
 (A) The monthly company picnic  
 (B) The yearly staff picnic  
 (C) The annual general meeting  
 (D) The monthly sales competition



本科目不可使用計算機\*

57. What was the problem last year?  
(A) Nobody came.  
(B) Sales were down.  
(C) It rained all day.  
(D) The event started late.
58. What did the man say to the woman about the weather?  
(A) He will check the forecast.  
(B) The weather should be fine.  
(C) The woman needs a raincoat.  
(D) It will likely rain all day again.
- 
59. What is the woman worried about?  
(A) The problem will be too expensive to fix.  
(B) The photocopier will be too difficult to repair.  
(C) The photocopier will be slower than before.  
(D) She will not be able to pay for the repairs.
60. What needs to be done to fix the copier?  
(A) It must be completely cleaned.  
(B) Two parts need to be replaced.  
(C) The costs need to be added up.  
(D) The copier needs to be replaced.
61. Why does the woman need the photocopier so quickly?  
(A) She misses her photocopier.  
(B) It will cost less.  
(C) Her boss needs it.  
(D) Many people use the copier.
- 
62. Who did the man see at the restaurant?  
(A) A coworker  
(B) His sister  
(C) The woman's sister  
(D) The woman's client
63. What did Marjorie think of the restaurant?  
(A) She thought it was great.  
(B) She thought it was bland.  
(C) She thought it was pricey.  
(D) She thought it was boring.
64. What did the man say about the restaurant?  
(A) It was good value for the money.  
(B) The atmosphere was a lot of fun.  
(C) It was poor value and quality.  
(D) He recommends going there.
- 
65. Where does the woman want to go?  
(A) To the city center  
(B) To City Hall  
(C) To the police station  
(D) To Hall Street
66. How often does the bus come?  
(A) Every 20 minutes  
(B) Twice every hour  
(C) Every 45 minutes  
(D) Four times every hour
67. What is the woman going to do?  
(A) Take a bus  
(B) Run there  
(C) Drive there  
(D) Take a taxi
- 
68. What are the man and woman discussing?  
(A) A change in schedule  
(B) Personnel changes  
(C) Marketing issues  
(D) Staff sick leave
69. When will the meeting be held?  
(A) Tuesday  
(B) Wednesday  
(C) Thursday  
(D) Friday
70. Why does Mr. Yamamoto need to be at the meeting?  
(A) He is the head of marketing.  
(B) He has important business.  
(C) He is the chair of the meeting.  
(D) He needs to discuss some points.



目不可使用計算機\*

**Part 4 Short Talks**

*Directions: You will hear some short talks given by a single speaker. You will be asked to answer three questions about what the speaker says in each short talk. Select the best response to each question, and mark the letter (A), (B), (C), or (D) on your answer sheet. The talks will be spoken only one time and will not be printed in your test book.*

71. What caused damage to the nearby houses?  
 (A) Equipment and stock  
 (B) A manufacturing plant  
 (C) Exploding gas canisters  
 (D) An investigation
72. How much damage was done?  
 (A) \$75 million  
 (B) \$20,000  
 (C) \$100 million  
 (D) \$100,000
73. What does the fire chief think caused the fire?  
 (A) The actions of an arsonist  
 (B) Poorly maintained gas containers  
 (C) A cigarette dropped by a worker  
 (D) It is still too soon to say.
- 
74. Where is this announcement likely taking place?  
 (A) At a department store  
 (B) At a fine restaurant  
 (C) At an airport  
 (D) At a hotel party
75. What items are NOT part of the event?  
 (A) Dresses  
 (B) Shirts  
 (C) Ties  
 (D) Boots
76. How many of each item can one customer buy?  
 (A) As many as they like  
 (B) One  
 (C) Two  
 (D) Five
77. Why will the office close early?  
 (A) Because of a staff strike  
 (B) Because of staff sickness  
 (C) Because of extreme weather  
 (D) Because of computer problems
78. What should employees do if they are unable to drive in the morning?  
 (A) Shovel the streets out around their homes  
 (B) Call the city council to request a snow plow  
 (C) Take the chance to enjoy time off at home  
 (D) Connect to the company network at home
79. For how long may employees work from home?  
 (A) One day  
 (B) Two days  
 (C) All week  
 (D) Indefinitely
- 
80. Why is the acai berry a super food?  
 (A) It is grown without chemicals.  
 (B) Its tiny berries are easy to digest.  
 (C) It has a lot of nutrition for its weight.  
 (D) It has been around for a long time.
81. How can a person take Acai Force?  
 (A) As a tea  
 (B) As leaves in a salad  
 (C) As a piece of fruit  
 (D) As a liquid or solid supplement
82. How does the advertisement say you can get Acai Force for free?  
 (A) Order from the website  
 (B) Grow some of it yourself  
 (C) Buy a 2-month supply  
 (D) Purchase it in Brazil



目不可使用計算機\*

83. What kind of company is Blue Sky Agency likely to be?  
(A) An insurance agency  
(B) A travel agency  
(C) A consulting agency  
(D) An employment agency
84. What should a caller do to find out when the agency is open?  
(A) Press 1  
(B) Press 2  
(C) Press 3  
(D) Hold the line
85. Why does the caller have to listen to this message?  
(A) No one is free to take the call.  
(B) The office is currently closed.  
(C) The caller dialed incorrectly.  
(D) No one works in the office.
- 
86. What is Mr. Simonson's book about?  
(A) Selling skateboards  
(B) Writing popular books  
(C) Starting a company  
(D) Overcoming difficulties
87. Why did Mr. Simonson retire from skateboarding?  
(A) He was hurt in a skateboarding accident.  
(B) He was getting too old for skateboarding.  
(C) He was depressed by his lack of success.  
(D) He wanted to become a public speaker.
88. Which people could benefit from Mr. Simonson's ideas?  
(A) Professional skateboarders  
(B) Business people  
(C) Injured people  
(D) All kinds of people
89. When are the seminars scheduled?  
(A) Tuesday night  
(B) Wednesday to Thursday mornings  
(C) Wednesday and Thursday afternoons  
(D) Friday afternoon
90. Under what conditions would the seminars be rescheduled?  
(A) If other seminars are too long  
(B) If meetings run overtime  
(C) If people are arriving late  
(D) If participants leave early
91. When will the program end?  
(A) Sunday night  
(B) Before the weekend  
(C) Tuesday afternoon  
(D) Wednesday evening
- 
92. Why is Luther calling?  
(A) To discuss a new account  
(B) To reschedule a meeting  
(C) To cancel a project  
(D) To discuss a survey
93. What is Luther's job?  
(A) Head of research and development  
(B) Mike's professional office assistant  
(C) An intern in the marketing department  
(D) A market research survey designer
94. When should Mike call Luther?  
(A) As soon as he can  
(B) Any time this week  
(C) Before looking at the data  
(D) After the project is finished
-



\* 本 科 目 不 可 使 用 計 算 機 \*

95. What should the passengers do when they get off the bus?

- (A) Inform the bus driver
- (B) Leave their valuables
- (C) Go to the ticket gate
- (D) Go to the boarding area

96. Where can valuables be kept?

- (A) At the ticket gate
- (B) On the tour bus
- (C) With the tour guide
- (D) In the cargo area

97. When does the announcement say the passengers should be back at the bus?

- (A) 15 minutes before departure
- (B) Right at six o'clock in the evening
- (C) Immediately after the tour ends
- (D) In a few minutes after they arrive

-----  
98. What kind of business does the speaker work for?

- (A) A veterinary clinic
- (B) An insurance agency
- (C) A delivery company
- (D) A local bakery

99. How much does this company's cheapest item cost?

- (A) \$5
- (B) \$15
- (C) \$75
- (D) \$200

100. What kinds of orders qualify for free delivery?

- (A) Orders to be delivered nearby
- (B) Orders that have been insured
- (C) All orders for wedding cakes
- (D) Orders for cupcakes or cheesecakes